

# 2020 Annual Report & Residential Recycling Report



**N**one of us will forget 2020 and while we each had our own personal experience of last year, our collective experience binds us. An out of control virus showed us how vulnerable we can be as humans, yet we saw how scientists applied the principles of nature to develop vaccines to protect us. We may have a greater appreciation for our fragile place on this planet and our responsibility to protect that which supports us. Nature always adapts, and

we must too. At the District we help people adopt simple strategies that support our environment. In 2020, this meant adapting to the closed world of the pandemic. We had to incorporate new ways of serving the public when we could not actually be with the public. Early in the year, we used the time to pause, ponder and pivot. By July, staff returned to the office and began rolling out programs and virtual communication strategies to meet our new reality. See our program highlights on the next panel.



**Cuyahoga County**  
SOLID WASTE DISTRICT

# Program Highlights

## 1 Zoom Zoom Zoom

Residents and businesses continued to expand their recycling and composting knowledge via Zoom. Our staff conducted their presentations and workshops online with great success. Conducting webinars enabled us to reach larger audiences with a variety of new presentations. Seems like people enjoy learning from home.

## 2 Recycling Ambassador

A Recycling Ambassador course was held in lieu of Master Recycler. The shorter online course trained Recycling Ambassadors to be a local recycling expert in their community. The course quickly became popular and has been held four times to date.

## 3 Latex Paint Recycling

We partnered with American Paint Recyclers in Van Wert, Ohio to help cities recycle latex paint they receive from residents. The recycled paint is sold under the EcoTone brand in Habitat for Humanity ReStores. Eleven cities are now using the service.

## 4 Television Recycling

When local retailers halted their TV recycling services due to pandemic concerns, the District stepped in and held its own event. We collected 79 televisions on Halloween. Residents paid \$20 per TV using our drive-through drop-off. This new program will be held twice a year.

## 5 What Do I Do With?

With people at home and cleaning their closets, we focused on helping them donate or recycle their stuff. This drove a record number of people to CuyahogaRecycles.org including 84% that were new to the site. In addition, local media featured the District in 41 news stories as the resource for managing their waste.

## 6 Composting

A record number of people started backyard composting with the help of the District. We held contactless compost bin sales throughout the summer and fall, accompanied by “how-to” webinars. Composting food scraps and yard waste into compost nurtures us and the environment.

# Parting Thoughts



31 years is a long time to work for one organization unless you are fortunate enough to have work that you believe in and wonderful people to work with. My time at the District has been filled with many opportunities and many dedicated coworkers and colleagues that share my commitment to doing good work. Whether we worked together every day or on occasion, I consider you a friend and I thank you for your support of the District and of me. It has been an honor.

*Diane T. Bickett*

## Meet our New Executive Director!



Beth Biggins-Ramer assumed the role of Executive Director following Diane Bickett's retirement on April 30. The District's Board selected Beth for her extensive experience in solid waste management. Early in her career Beth was the solid waste planner for the District, before moving to Arizona to work as a solid waste manager for the cities of Buckeye and Phoenix. Since 2014, Beth has been the director of the Medina County Solid Waste District creating a county-wide recycling system. She was excited to return to her recycling roots in Cuyahoga County and to build upon the work of the District. Welcome, Beth!

### Our Staff

**Beth Biggins-Ramer** *Executive Director*

**Jessica Fenos** *Assistant Director*

**Carin Miller** *Education Specialist*

**Maria Ortiz** *Business Administrator*

**Doreen Schreiber** *Business Recycling Specialist*

**Cristie Snyder** *Communications Specialist*

**Matt Walters** *Recycling Programs Coordinator*

### Our Board of Directors

**Michael Dever** *Director, Cuyahoga County Public Works*

**Mike Foley** *Director of Sustainability, Cuyahoga County*

**Sunny Simon** *Council Member, Cuyahoga County Council*

### Our Headquarters

Cuyahoga County Solid Waste District

4750 East 131 Street, Garfield Heights, OH 44105

216.443.3749 [CuyahogaRecycles.org](http://CuyahogaRecycles.org)

## Recycling Outreach

**1.6 Million**  
residents reached through digital advertising

**73,629**  
visitors to CuyahogaRecycles.org with 373,629 page views

**42,061**  
brochures and e-newsletters distributed

**235,600**  
households reached through Community Recycling Awareness grant

## Education & Technical Support

**2,105**  
adults participated in one of 89 recycling and composting seminars

**286**  
businesses received recycling program support

**423**  
employees participated in one of 23 workplace recycling webinars

**\$149,000**  
in Community Recycling Awareness Grants

**3,983**  
callers to our recycling hotline assisted

## Special Waste Collections

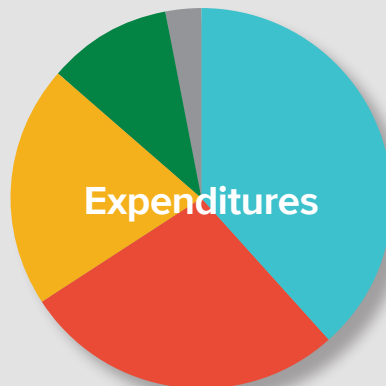
**410,920**  
pounds of e-waste

**370,000**  
pounds of household hazardous waste

**16,333**  
scrap tires

**5,500**  
pounds of TVs, 3,400 pounds of campaign signs & 1,140 holiday lights

## 2020 Financial Report



**Revenue** **\$2,146,363**

● Generation Fees	\$2,003,160
● Grants	\$99,172
● Misc. Revenue	\$44,031

**Expenditures** **\$2,276,994**

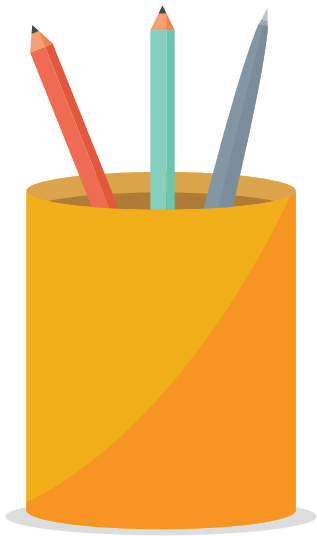
● Programs & Services	\$872,760
● Salary and Benefits	\$625,420
● Operating	\$469,049
● Health Departments	\$244,743
● County Indirect Charges	\$65,022

**Year End Cash Balance** **\$2,894,565**

# 2020 Residential Recycling Report

## Key

This chart shows the percentage of each community's waste stream that was recycled and composted in 2020. These add up to the total recycling rate for each community.



## % Recycled

The percentage of the community's total residential waste collected for recycling. Includes cans, cartons, glass, paper and boxes, plastic bottles and jugs, scrap metal, appliances, computers, household hazardous wastes and scrap tires collected through curbside, drop-off and other collection programs.

Includes cans, cartons, glass, paper and boxes, plastic bottles and jugs, scrap metal, appliances, computers, household hazardous wastes and scrap tires collected through curbside, drop-off and other collection programs.

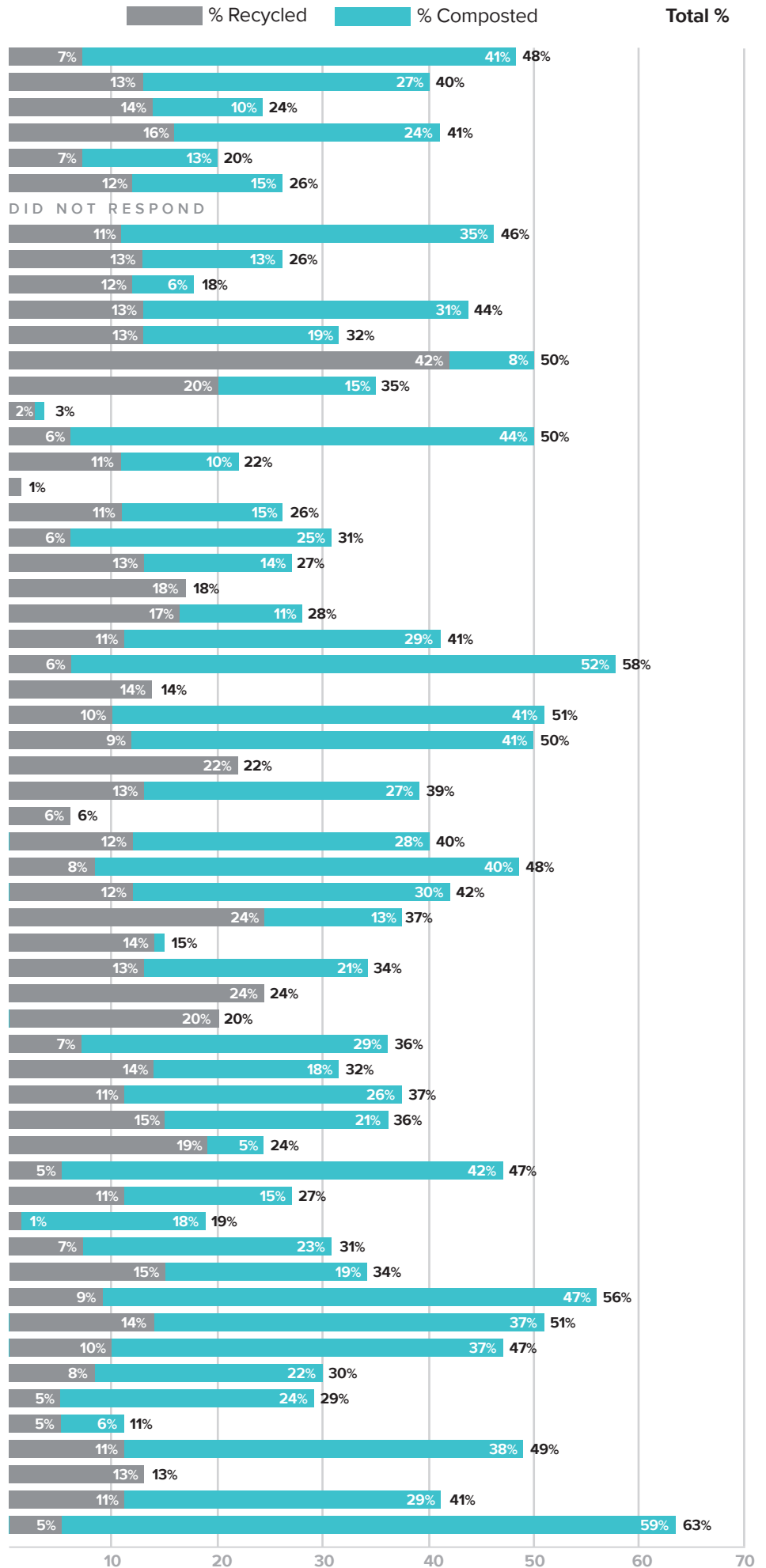
## % Composted

The percentage of a community's total residential waste that was collected for composting or mulching. Includes yard waste leaves, grass, brush and wood waste.

\* Percentages may not add up to the total due to rounding.

## Community

- Bay Village
- Beachwood
- Bedford
- Bedford Heights
- Bentleyville
- Berea
- Bratenahl
- Brecksville
- Broadview Heights
- Brook Park
- Brooklyn
- Brooklyn Heights
- Chagrin Falls Twp
- Chagrin Falls Village
- Cleveland
- Cleveland Heights
- Cuyahoga Heights
- East Cleveland
- Euclid
- Fairview Park
- Garfield Heights
- Gates Mills
- Glenwillow
- Highland Heights
- Highland Hills
- Hunting Valley
- Independence
- Lakewood
- Linndale
- Lyndhurst
- Maple Heights
- Mayfield Heights
- Mayfield Village
- Middleburg Heights
- Moreland Hills
- Newburgh Heights
- North Olmsted
- North Randall
- North Royalton
- Oakwood
- Olmsted Falls City
- Olmsted Township
- Orange
- Parma
- Parma Heights
- Pepper Pike
- Richmond Heights
- Rocky River
- Seven Hills
- Shaker Heights
- Solon
- South Euclid
- Strongsville
- University Heights
- Valley View
- Walton Hills
- Warrensville Heights
- Westlake
- Woodmere





# 2020 Residential Recycling Report

## Key

This data reflects materials collected through each community's residential waste collection, recycling and yard waste management programs. It excludes materials from commercial buildings, retail stores, restaurants and apartment complexes that are not served by the community's waste collection program.

## 2020 Tons Landfilled Solid Waste =

Consists of non-recycled trash that is taken to a landfill for disposal.

## 2020 Tons Recycled Recyclables =

Consists of cans, cartons, glass, paper and boxes, plastic bottles and jugs, scrap metal, appliances, computers, household hazardous waste and scrap tires that are collected for recycling.

## 2020 Tons Recycled Organics =

Consists of yard waste, leaves, grass, brush and wood collected for mulching and/or composting.

## 2020 Total Recycling Rate =

The percentage of residential waste diverted from landfills through the community's reuse, recycling and composting programs. The recycling rate is calculated by dividing the total tons recycled (organics + recyclables) by the total tons of waste generated (tons landfilled + tons recycled).

## 2019 Total Recycling Rate

Provided for comparison purposes.

Community	2020 Landfilled Solid Waste	2020 Tons Recycled Recyclables	2020 Tons Recycled Organics	2020 Total Recycling Rate	2019 Total Recycling Rate
Bay Village	7,950.73	1,010.00	6,319.80	47.97%	58.64%
Beachwood	3,878.71	831.30	1,725.30	39.73%	35.25%
Bedford	4,233.51	749.77	567.28	23.73%	17.22%
Bedford Heights	2,391.04	661.06	969.00	40.54%	40.53%
Bentleyville	1,037.00	85.15	172.00	19.87%	23.78%
Berea	6,450.93	1,013.24	1,303.75	26.43%	38.01%
Bratenahl	D I D	N O T	R E S P O N D		56.39%
Brecksville	5,515.51	1,152.86	3,615.20	46.37%	46.49%
Broadview Heights	8,015.90	1,429.06	1,455.42	26.46%	26.58%
Brook Park	9,842.10	1,381.27	717.73	17.58%	15.72%
Brooklyn	3,878.22	910.70	2,153.13	44.13%	43.45%
Brooklyn Heights	729.54	135.89	207.73	32.02%	36.17%
Chagrin Falls Township	18.00	15.00	3.00	50.00%	30.17%
Chagrin Falls Village	1,770.65	548.04	419.77	35.34%	33.84%
Cleveland	154,859.86	2,846.40	1,220.33	2.56%	3.65%
Cleveland Heights	19,523.68	2,526.42	16,986.10	49.99%	68.97%
Cuyahoga Heights	352.24	51.81	46.44	21.81%	19.83%
East Cleveland	6,287.58	87.48	0.00	1.37%	1.32%
Euclid	16,922.30	2,407.87	3,531.62	25.98%	29.43%
Fairview Park	7,955.00	653.00	2,891.30	30.82%	43.84%
Garfield Heights	11,939.87	2,119.03	2,257.40	26.82%	35.05%
Gates Mills	1,098.07	241.42	5.73	18.37%	18.46%
Glenwillow	300.95	69.96	45.08	27.65%	38.81%
Highland Heights	3,874.58	740.41	1,921.63	40.72%	41.68%
Highland Hills	299.50	39.14	367.56	57.59%	57.74%
Hunting Valley	523.59	83.66	0.00	13.78%	13.22%
Independence	3,710.34	775.36	3,133.69	51.30%	51.33%
Lakewood	19,987.78	3,727.25	16,286.00	50.03%	54.78%
Linndale	59.79	17.23	0.00	22.37%	20.44%
Lyndhurst	6,204.25	1,278.24	2,718.00	39.18%	40.98%
Maple Heights	10,888.47	670.53	1.00	5.81%	8.81%
Mayfield Heights	4,698.02	945.18	2,233.70	40.36%	34.58%
Mayfield Village	1,477.21	221.97	1,139.17	47.96%	41.55%
Middleburg Heights	3,624.74	762.92	1,839.67	41.79%	49.97%
Moreland Hills	1,453.57	553.70	303.59	37.10%	40.15%
Newburgh Heights	884.65	142.60	7.69	14.52%	15.66%
North Olmsted	13,234.44	2,571.47	4,182.01	33.79%	42.10%
North Randall	127.72	40.00	0.00	23.85%	19.42%
North Royalton	11,798.80	3,026.24	6.33	20.45%	20.92%
Oakwood	1,329.09	134.72	604.10	35.73%	36.05%
Olmsted Falls City	3,846.95	775.11	1,021.49	31.83%	23.38%
Olmsted Township	4,701.81	819.88	1,975.49	37.29%	33.84%
Orange	1,340.72	305.42	436.99	35.64%	43.59%
Parma	24,305.63	6,092.95	1,629.40	24.11%	30.00%
Parma Heights	5,398.37	509.35	4,271.99	46.97%	48.43%
Pepper Pike	2,985.10	462.66	618.50	26.59%	33.55%
Richmond Heights	4,369.07	49.84	975.84	19.01%	22.57%
Rocky River	9,095.00	946.72	3,062.24	30.59%	39.42%
Seven Hills	6,045.20	1,376.65	1,737.00	34.00%	32.74%
Shaker Heights	9,147.37	1,835.50	9,895.22	56.19%	59.01%
Solon	7,774.00	2,147.72	5,833.57	50.66%	48.85%
South Euclid	8,732.20	1,716.00	6,161.00	47.43%	46.90%
Strongsville	22,478.77	2,635.79	7,192.37	30.42%	29.63%
University Heights	5,045.00	352.05	1,661.67	28.53%	29.92%
Valley View	1,053.40	60.03	70.05	10.99%	31.53%
Walton Hills	910.13	191.65	688.17	49.15%	50.73%
Warrensville Heights	3,087.97	455.64	0.80	12.88%	17.24%
Westlake	13,742.89	2,635.96	6,734.32	40.54%	40.10%
Woodmere	164.85	21.06	264.43	63.39%	64.29%
Community Totals	493,352.36	60,060.11	135,587.79	28.40%	30.99%



**Cuyahoga County**  
SOLID WASTE DISTRICT  
CuyahogaRecycles.org

4750 East 131 Street, Garfield Heights, OH 44105  
(216) 443-3749 [www.cuyahogarecycles.org](http://www.cuyahogarecycles.org)

